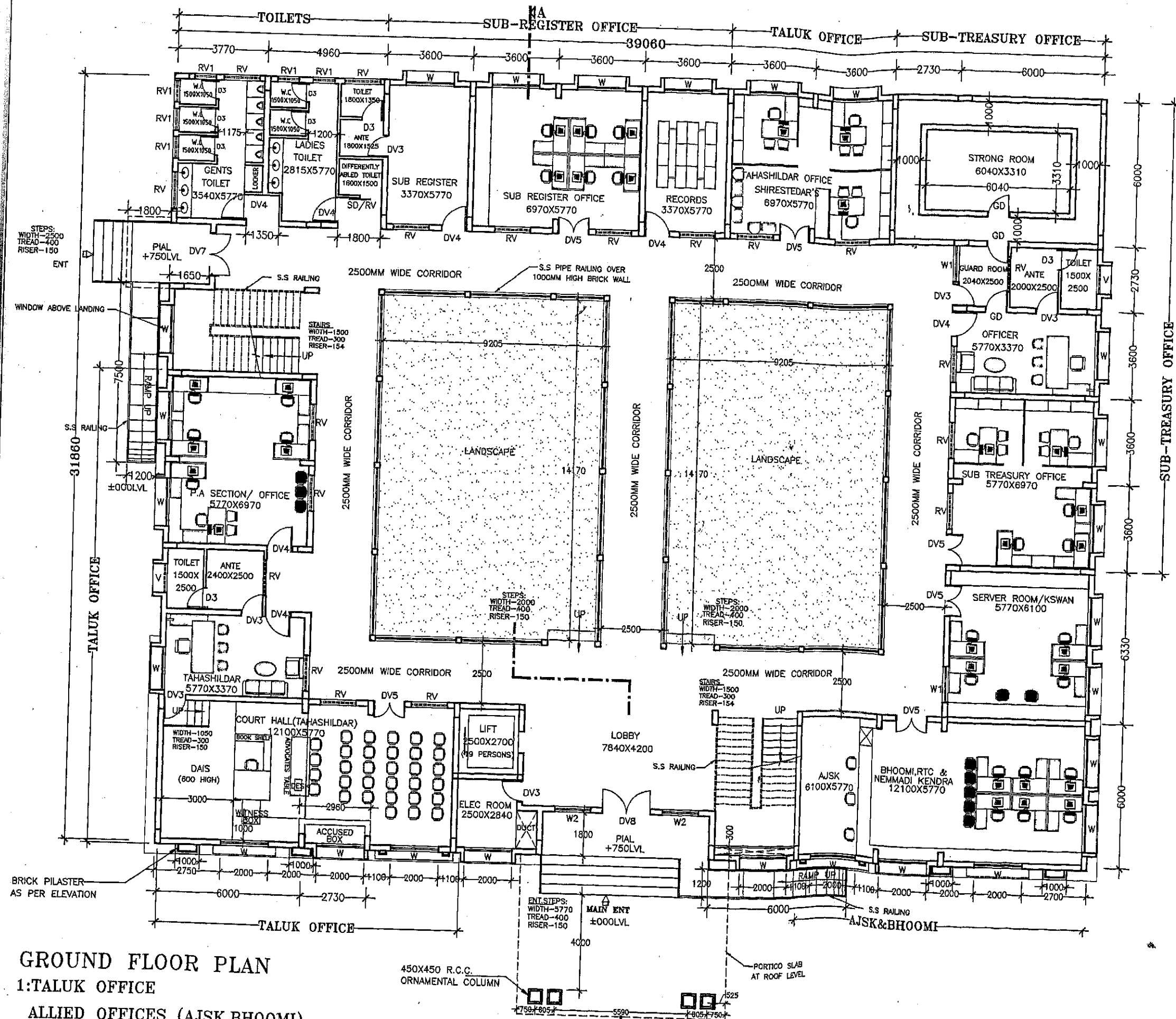


FOR NEW TALUKA PLACE



TYPE-A

GENERAL SPECIFICATIONS

- FOUNDATION** - TO BE DESIGNED FOR GROUND + 2 FLOORS.
- SUPER STRUCTURE** - R.C.C. FRAMED STRUCTURE WITH 230TH BRICK WALL/ 200mm TH. AAC (AUTOCLAVED AERATED CONCRETE) BLOCKS FOR EXTERNAL WALLS. 230mm & 115mm TH. BRICK WALLS FOR INTERNAL WALLS.
- FLOORING** - ENTRANCE, PIAL, LOBBY, STEPS, STAIRCASE AND CORRIDOR MACHINE CUT AND MACHINE POLISHED GRANITE OF APPROVED COLOUR AND VITRIFIED TILES FOR ALL OTHER AREAS OF SIZE 600X600/800X800. -ANTISKID CERAMIC TILE FOR TOILETS OF SIZE 300X300. -300X600 GLAZED TILES IN CM UPTO LINTEL LVL IN TOILETS.
- DAWDOING** - 150mm RCC SLAB+150mm BBC(WATER PROOFING 85mm EPS BOARD INSULATION +35 MM SCREED + TOP SURFACE TREATED WITH HEAT REFLECTIVE PAINT.
- ROOFING & WATER PROOFING** - 150mm RCC SLAB+150mm BBC(WATER PROOFING 85mm EPS BOARD INSULATION +35 MM SCREED + TOP SURFACE TREATED WITH HEAT REFLECTIVE PAINT.
- PLASTERING** - INTERNAL: CM 1:6 WITH LIME RENDERING. -EXTERNAL: CM 1:6 WITH SPONGE FINISH. -CEILING: CM 1:6 WITH LIME RENDERING.
- PAINTING** - EXTERNAL: -ANTIALGAL WEATHER COAT. EXTERIOR EMULSION. INTERNAL: PLASTIC EMULSION. JOINERY: ENAMEL PAINT.
- RAIN WATER HARVESTING** - PROVISION TO BE MADE.
- SOLAR LIGHTING & SOLAR WATER HEATING** - PROVISION TO BE MADE.

SCHEDULE OF OPENINGS

DOORS	
DV6-2000X2850	SAL FRAME WITH HONNE STYLE & HONNE PANEL
DV7-1800X2850	SAL FRAME WITH HONNE PANEL
DV5-1300X2850	SAL FRAME WITH FLUSH SHUTTERS
DV4-1050X2850	SAL FRAME WITH FLUSH SHUTTERS
DV3-900X2850	SAL FRAME WITH FLUSH SHUTTERS
D3-800X2100	SOLID CORE PVC PANEL DOOR
SD-900X2100	PVC SLIDING DOOR
GD-1300X2100	GRILL DOOR

WINDOWS AND VENTILATORS

W - 2000X1850	UPVC-UNPLASTICIZED POLY VINYL CHLORIDE WINDOWS WITH ENERGY EFFICIENT GLASS
W1 - 1500X1850	UPVC-UNPLASTICIZED POLY VINYL CHLORIDE WINDOWS WITH ENERGY EFFICIENT GLASS
W2 - 1500X2350	UPVC-UNPLASTICIZED POLY VINYL CHLORIDE WINDOWS WITH ENERGY EFFICIENT GLASS
V - 1200X600	UPVC-UNPLASTICIZED POLY VINYL CHLORIDE VENTILATORS WITH AIRGAP/LOUVERS WITH ENERGY EFFICIENT GLASS
RV - 1500X800	UPVC-UNPLASTICIZED POLY VINYL CHLORIDE VENTILATORS WITH AIRGAP/LOUVERS WITH ENERGY EFFICIENT GLASS
RV1 - 900X600	UPVC-UNPLASTICIZED POLY VINYL CHLORIDE VENTILATORS WITH AIRGAP/LOUVERS WITH ENERGY EFFICIENT GLASS

AREA STATEMENT

GROUND FLOOR	1000.00 SQMT
FIRST FLOOR	800.00 SQMT
TERRACE FLOOR	135.00 SQMT

TOTAL AREA 1735.00 SQMT

OFFICE OF THE CHIEF ARCHITECT
P.W.D.OFFICES, GOVT. OF KARNATAKA
K.R.CIRCLE, BENGALURU -560001

DEALT BY : GIRISH PY

CHECKED BY

SENIOR ASSISTANT ARCHITECT

CHECKED BY

DEPUTY ARCHITECT

DEPUTY CHIEF ARCHITECT-2

DEPUTY CHIEF ARCHITECT-1

DEPUTY CHIEF ARCHITECT-2

DEPUTY CHIEF ARCHITECT-1

DEPUTY CHIEF ARCHITECT-2

DEPUTY CHIEF ARCHITECT-1

DEPUTY CHIEF ARCHITECT-2

DEPUTY CHIEF ARCHITECT-1

DEPUTY CHIEF ARCHITECT-2

DEPUTY CHIEF ARCHITECT-1

DEPUTY CHIEF ARCHITECT-2

DEPUTY CHIEF ARCHITECT-1

DEPUTY CHIEF ARCHITECT-2

DEPUTY CHIEF ARCHITECT-1

DEPUTY CHIEF ARCHITECT-2

DEPUTY CHIEF ARCHITECT-1

DEPUTY CHIEF ARCHITECT-2

DEPUTY CHIEF ARCHITECT-1

DEPUTY CHIEF ARCHITECT-2

DEPUTY CHIEF ARCHITECT-1

DEPUTY CHIEF ARCHITECT-2

DEPUTY CHIEF ARCHITECT-1

DEPUTY CHIEF ARCHITECT-2

DEPUTY CHIEF ARCHITECT-1

DEPUTY CHIEF ARCHITECT-2

DEPUTY CHIEF ARCHITECT-1

DEPUTY CHIEF ARCHITECT-2

DEPUTY CHIEF ARCHITECT-1

DEPUTY CHIEF ARCHITECT-2

DEPUTY CHIEF ARCHITECT-1

DEPUTY CHIEF ARCHITECT-2

DEPUTY CHIEF ARCHITECT-1

DEPUTY CHIEF ARCHITECT-2

DEPUTY CHIEF ARCHITECT-1

DEPUTY CHIEF ARCHITECT-2

DEPUTY CHIEF ARCHITECT-1

DEPUTY CHIEF ARCHITECT-2

DEPUTY CHIEF ARCHITECT-1

DEPUTY CHIEF ARCHITECT-2

DEPUTY CHIEF ARCHITECT-1

DEPUTY CHIEF ARCHITECT-2

DEPUTY CHIEF ARCHITECT-1

DEPUTY CHIEF ARCHITECT-2

DEPUTY CHIEF ARCHITECT-1

GROUND FLOOR PLAN
1:TALUK OFFICE
ALLIED OFFICES (AJSK,BHOOMI)
2:SUB-TREASURY OFFICE
3:SUB-REGISTRAR OFFICE

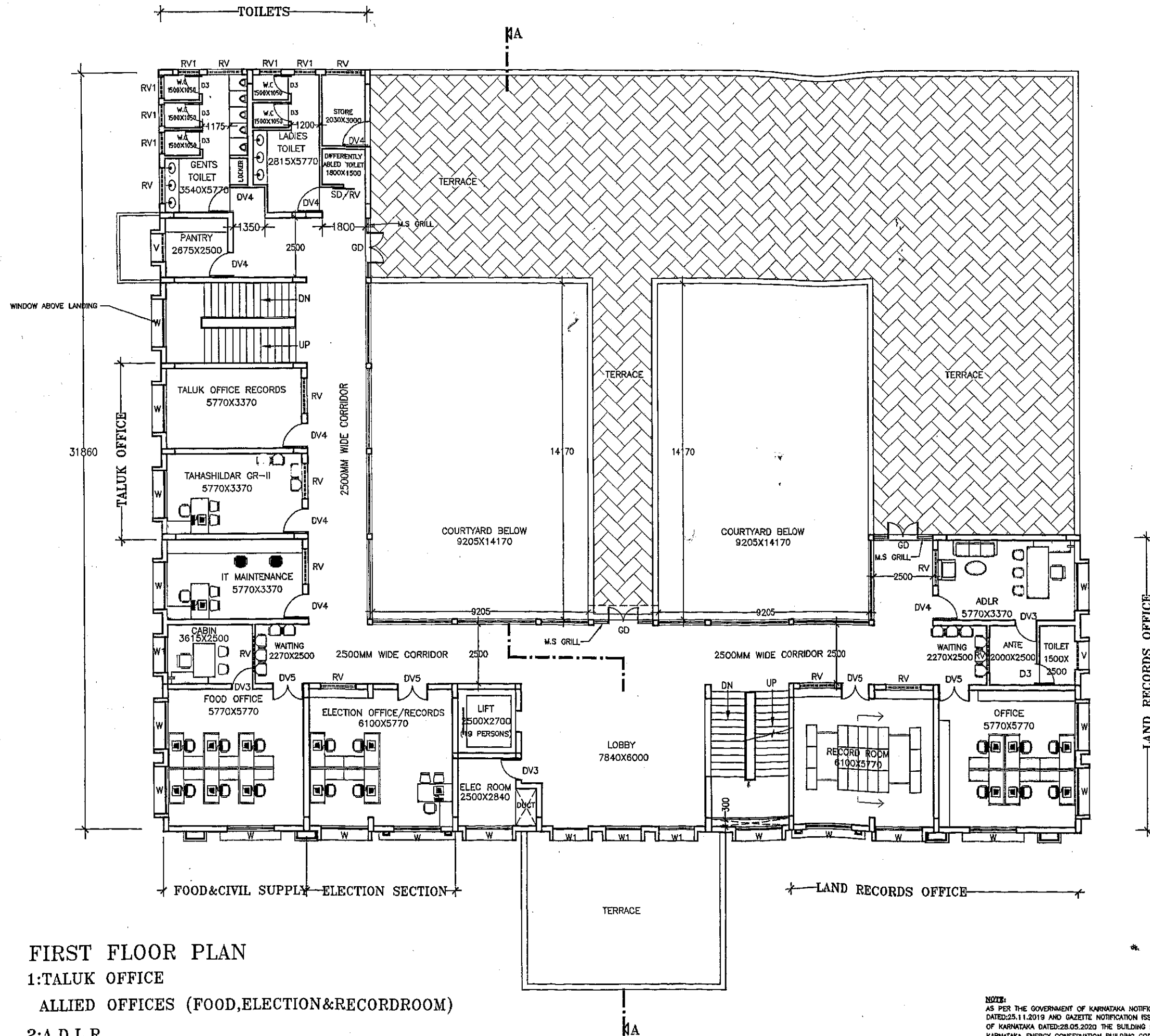
NOTE:
AS PER THE GOVERNMENT OF KARNATAKA NOTIFICATION NO.171/VSC/2018, DATED:25.11.2019 AND GAZETTE NOTIFICATION ISSUED BY THE GOVERNMENT OF KARNATAKA DATED:28.05.2020 THE BUILDING SHALL BE COMPLIED WITH KARNATAKA ENERGY CONSERVATION BUILDING CODE (K-EEBC) RULES 2018 IN RESPECT OF CIVIL, ELECTRICAL AND MECHANICAL WORKS.
*Materials, fittings, equipments etc.

SCALE- 1:100

DRG NO: 15671/TYPE-A/1

FOR NEW TALUKA PLACE

TYPE-A



OFFICE OF THE CHIEF ARCHITECT
P.W.D.OFFICES, GOVT. OF KARNATAKA
K.R.CIRCLE, BENGALURU -560001

DEALT BY : GIRISH PY

CHECKED BY
[Signature]
SENIOR ASSISTANT ARCHITECT

CHECKED BY
[Signature]
DEPUTY ARCHITECT

[Signature]
DEPUTY CHIEF ARCHITECT-2

[Signature]
DEPUTY CHIEF ARCHITECT-1

[Signature]
2.5/2/2025
CHIEF ARCHITECT (I/C)

PROJECT NAME:
**PROPOSED PRAJA SOUDHA -
TALUK AADALITHA KENDRA
(TYPE A)**

SHEET TITLE:
FIRST FLOOR PLAN

SCALE- 1:100

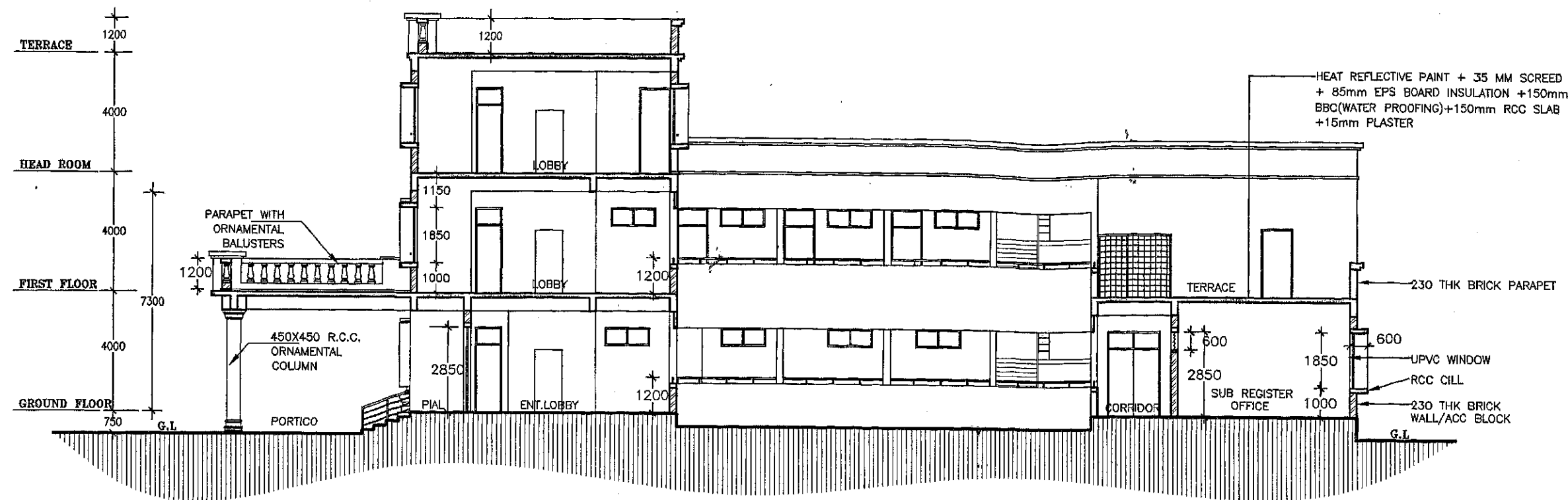
DRG NO: 15671/TYPE-A/2

DATE OF BLUE PRINT:

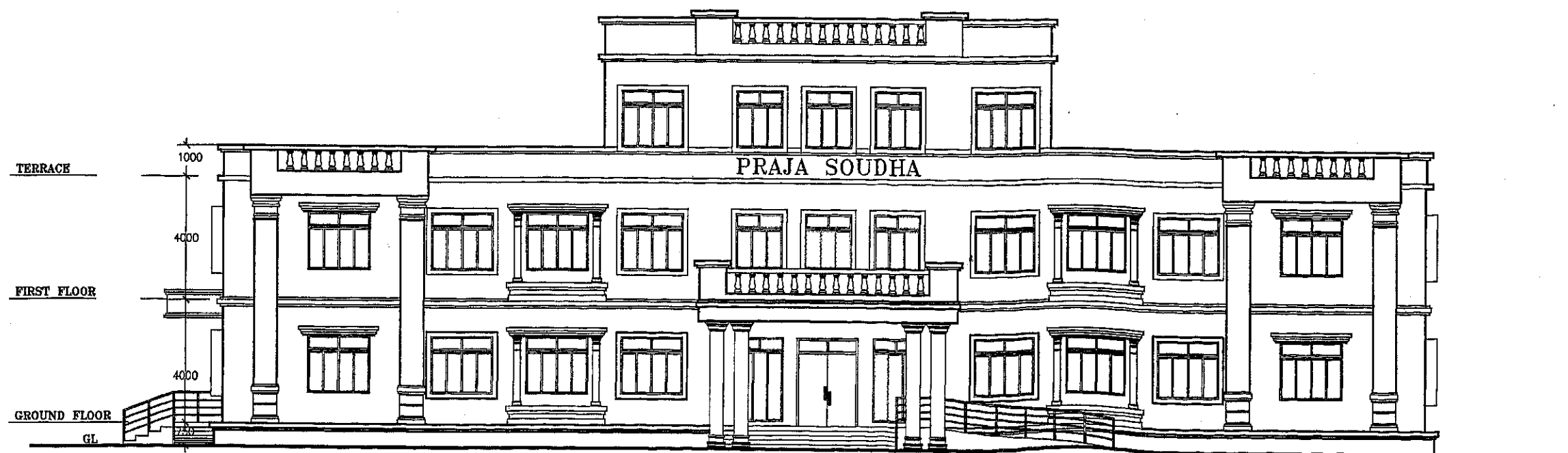
NOTE:
AS PER THE GOVERNMENT OF KARNATAKA NOTIFICATION NO:EN/171/VSC/2019,
DATED:25.11.2019 AND GAZETTE NOTIFICATION ISSUED BY THE GOVERNMENT
OF KARNATAKA DATED:28.05.2020 THE BUILDING SHALL BE COMPLIED WITH
KARNATAKA ENERGY CONSERVATION BUILDING CODE (K-ECBC) RULES 2018
IN RESPECT OF CIVIL, ELECTRICAL AND MECHANICAL WORKS.
*Materials, fittings, equipments,such items are to be strictly BEE star rated
energy efficient only for all civil, electrical, mechanical works.

FOR NEW TALUKA PLACE

TYPE-A



SECTION AT A-A



FRONT ELEVATION

OFFICE OF THE CHIEF ARCHITECT
P.W.D.OFFICES, GOVT. OF KARNATAKA
K.R.CIRCLE, BENGALURU -560001

DEALT BY : GIRISH PY

CHECKED BY
SENIOR ASSISTANT ARCHITECT

CHECKED BY
DEPUTY ARCHITECT

DEPUTY CHIEF ARCHITECT-2

DEPUTY CHIEF ARCHITECT-1

CHIEF ARCHITECT (I/C)

PROJECT NAME:
PROPOSED PRAJA SOUDHA -
TALUK AADALITHA KENDRA
(TYPE A)

SHEET TITLE:
FRONT ELEVATION AND SECTION

SCALE- 1:100 DRG NO: 15671/TYPE-A/3

DATE OF BLUE PRINT: